




THE BEAUTY OF SLATE. THE STRENGTH OF LAMARITE.®

SHINGLES AND ACCESSORIES

 **LAMARITE® SLATE**  
COMPOSITE SHINGLES **TAMKO**



Dusk Grey with Mulberry Accents  
12-inch width  
Uniform Exposure

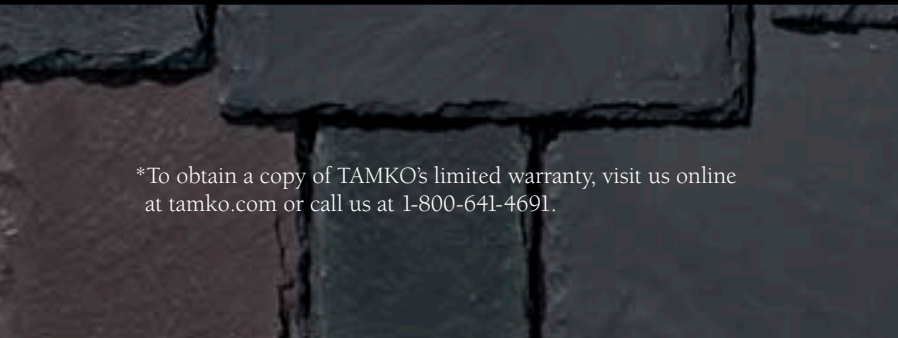
Homeowners have long used slate shingles to add distinction and character to their homes. They create a magnificent beauty and allure that is surpassed only by nature itself.

Now Lamarite® shingles offer all the beauty of real slate without the high cost and performance issues. And by providing a variety of colors and styles, enduring Lamarite shingles let you create a distinct look that will last.

From the custom look of diamond-cut and scalloped shingles to the convenience of Lamarite Starter Course shingles, all Lamarite products are complete with TAMKO's trusted service and come with a 50-year limited warranty\*.



**MORE DISTINCTION.**



\*To obtain a copy of TAMKO's limited warranty, visit us online at [tamko.com](http://tamko.com) or call us at 1-800-641-4691.





Dusk Grey with Mulberry Accents  
5-, 7- and 12-inch widths  
Offset Exposure

### Authentic Contours

With their authentic contours and chiseled edges, Lamarite® Slate Composite Shingles create a striking and distinctive presence. And they're manufactured in multiple patterns to help assure a random appearance on the roof.

### Colors & Exposure

Whether you prefer a uniform or random color scheme, you can achieve a truly unique look by using various widths at different exposure lengths, or by using an occasional accent color.

“Cool colors” are also available to help reduce energy consumption and lower your utility bills. Available by special order, these shingles meet the standards of the Cool Roof Rating Council (CRRC). Choose from Pale Olive, Natural Sand, Terra Cotta and Almond Shell. To view the cool color samples, visit [lamarite.com](http://lamarite.com).



MORE BEAUTY.

As with real slate, Lamarite Slate Composite Shingles will weather to a lighter shade after exposure to the environment, creating a natural, beautiful look.

Increased variation in color uniformity may occur to Lamarite shingles in the vicinity of exposed copper or other metals.

Note: Reproduction of these colors is as accurate as our printing will permit. TAMKO® recommends viewing an actual roof installation prior to final color selection for the full impact of color blending and patterns.

U.S. PATENT NO. 7,475,516

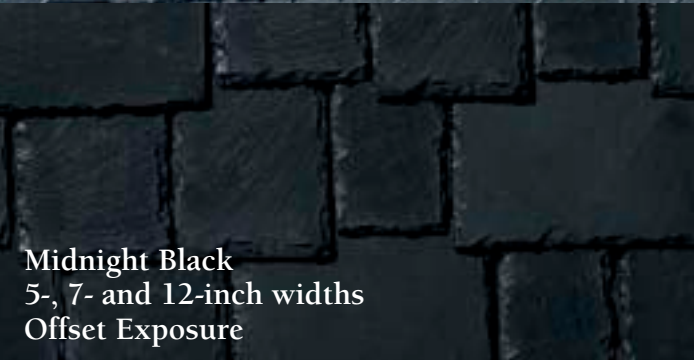




Dusk Grey  
5-, 7- and 12-inch widths  
Offset Exposure



Mulberry  
5-, 7- and 12-inch widths  
Offset Exposure



Midnight Black  
5-, 7- and 12-inch widths  
Offset Exposure



Slate Green  
5-, 7- and 12-inch widths  
Offset Exposure



Dusk Grey, Mulberry and Slate Green  
5-, 7- and 12-inch widths  
Offset Exposure



Dusk Grey Diamonds

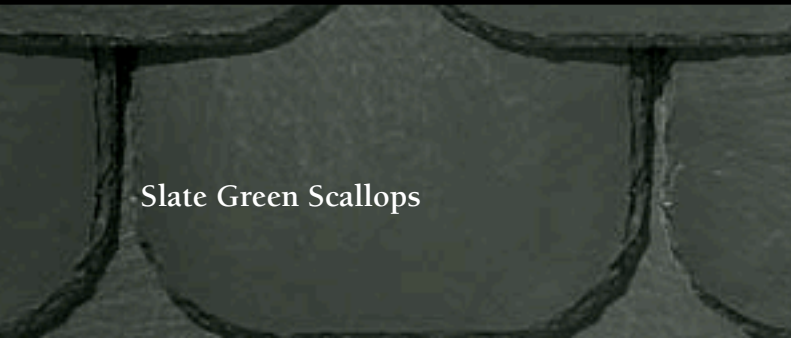
**Scalloped and Diamond-Cut Slate Shingles**

The classic beauty of Lamarite® Slate Composite Shingles is available in scalloped and diamond-cut variations, offering even more ways to add distinction to your home.



Dusk Grey 12-inch width, and Dusk Grey and Mulberry Diamonds

**MORE OPTIONS.**



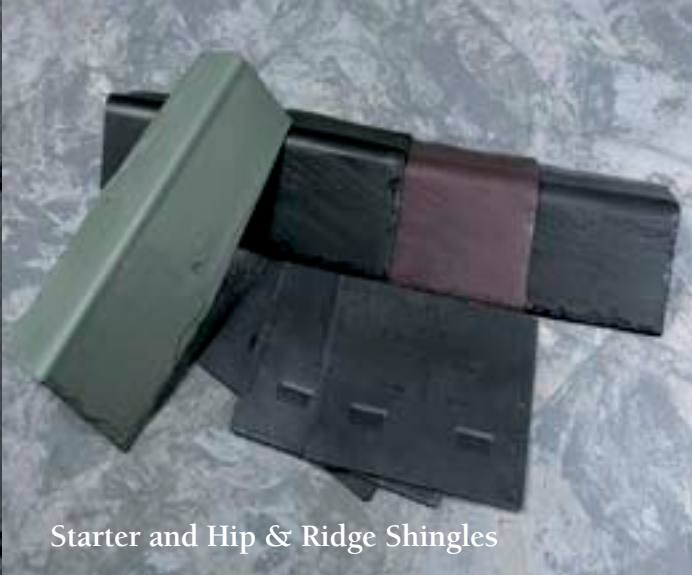
Slate Green Scallops



Dusk Grey 12-inch width and Slate Green Scallops



Dusk Grey, Mulberry and Slate Green 12-inch width and Scallops



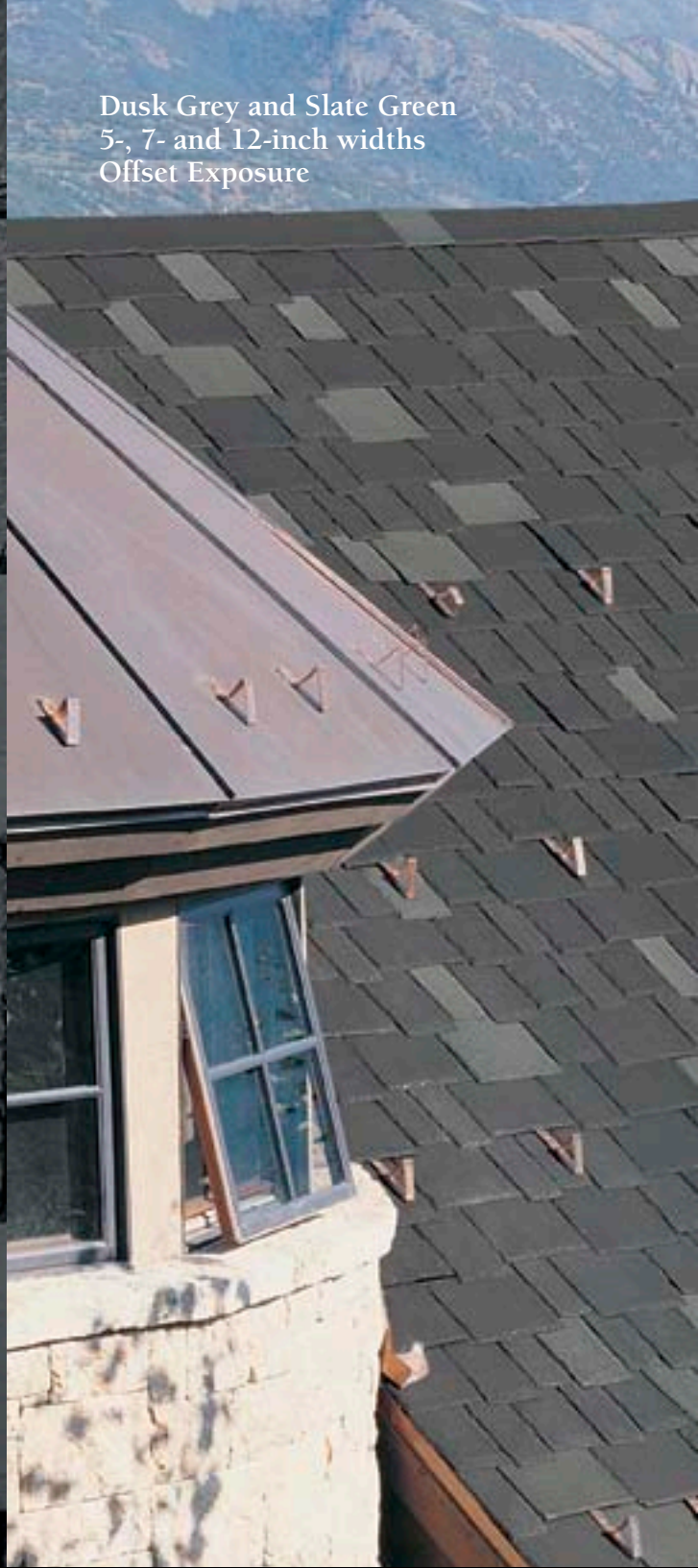
Starter and Hip & Ridge Shingles

**Lamarite® Slate Hip & Ridge Shingles**

Lamarite® offers preformed hip & ridge shingles that help create a more authentic slate appearance. And to complement Lamarite Slate Shingles, they are available in all slate colors.

**Lamarite Slate Starter Course Shingles**

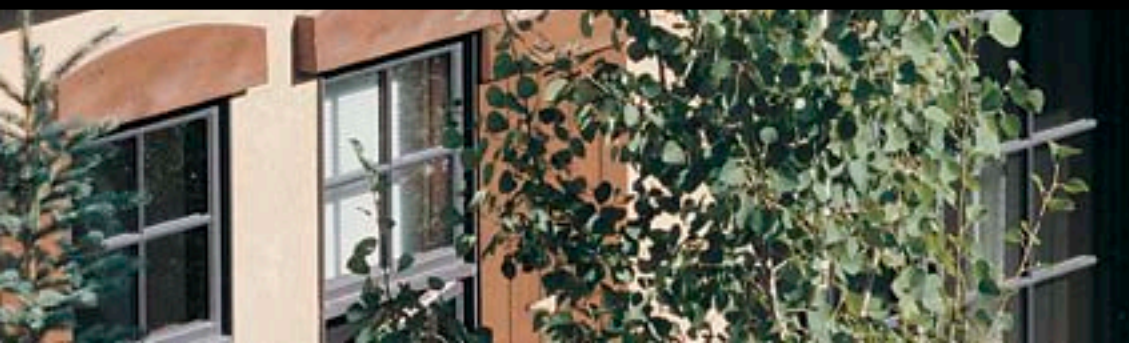
Providing a precise look and added convenience, factory-cut Lamarite Slate Starter Course Shingles are designed for accurate installation of Lamarite Slate Composite Shingles.



Dusk Grey and Slate Green  
5-, 7- and 12-inch widths  
Offset Exposure

**MORE PRECISION.**





## Robust Composite Material

Lamarite® Slate Composite Shingles provide the superior roofing performance you demand. They are made with a robust composite material and are listed for UL Class A fire resistance and UL standard 2218, Class 4 impact resistance.

Lamarite shingles offer incredible beauty, strength and affordability in a product that comes with a 50-year limited warranty\* from TAMKO®



## TW Metal & Tile Underlayment

TW Metal & Tile Underlayment is well suited for application under roofs where prevention of water penetration is required. The underlayment meets ASTM D 1970 for nail sealability of self-adhered roofing underlayments, withstands high temperature conditions up to 250°F and helps provide Class A fire protection when used with Lamarite Slate Composite Shingles.

## Moisture Guard Plus®

Moisture Guard Plus® provides an extra layer of waterproofing protection and features a nonskid surface for improved traction and safer application. It meets ASTM D 1970 for nail sealability of self-adhered roofing underlayments and helps provide Class A fire protection when used with Lamarite Slate Composite Shingles.



MORE PERFORMANCE.

\*To obtain a copy of TAMKO's limited warranty, visit us online at [tamko.com](http://tamko.com) or call us at 1-800-641-4691.



TW Metal & Tile Underlayment



Moisture Guard Plus®



Dusk Grey, Slate Green and Mulberry  
12-inch width  
Offset Exposure



## BUILDING PRODUCTS FOR THE PROFESSIONAL

Since 1944, roofing contractors and homeowners have looked to TAMKO® for quality building products built to perform. In addition to Lamarite® Slate Composite Shingles, TAMKO offers a complete line of residential products, including Lamarite® Shake Composite Shingles, MetalWorks® Steel Shingles, Heritage® laminated shingles and 3-tab asphalt shingles, waterproofing materials, ventilation products, asbestos-free cements & coatings, EverGrain® and Elements® Composite Decking and Railing and Tam-Rail® Railing. Each of these products delivers the assurance of TAMKO quality, performance and durability.



### **LAMARITE® SLATE**

COMPOSITE SHINGLES 

P.O. Box 1404  
Joplin, MO 64802  
1-800-641-4691  
tamko.com  
lamarite.com

Cover photo shingle colors are Dusk Grey, Mulberry and Slate Green, 12-inch width, Uniform Exposure.

Information included in this brochure was current at the time of printing. To obtain a copy of the most current version of this brochure, visit us online at tamko.com or call us at 1-800-641-4691.

©2009 TAMKO Building Products, Inc.  
TAMKO, Heritage, MetalWorks, Moisture Guard Plus and Tam-Rail are registered trademarks of TAMKO Building Products, Inc.  
Lamarite, EverGrain and Elements are registered trademarks of Epoch Composite Products, Inc.

